

Install SQL Server 2012

August 14, 2012

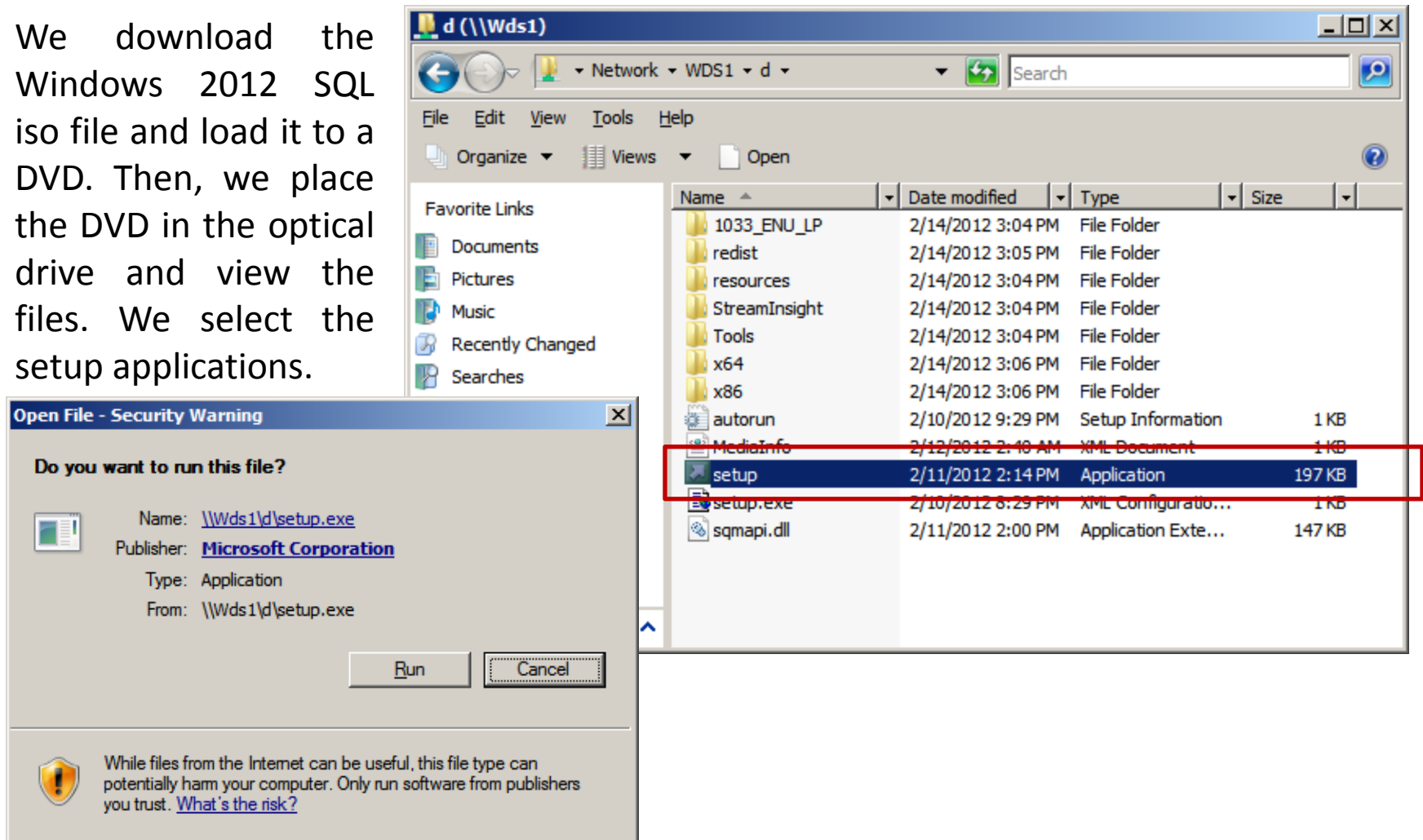
Operating System

We will first build a complete Application server by installing Windows 2008 Enterprise edition on a machine. Next, we will join the domain like any other machine. Our ensuing step is to install SQL 2012.



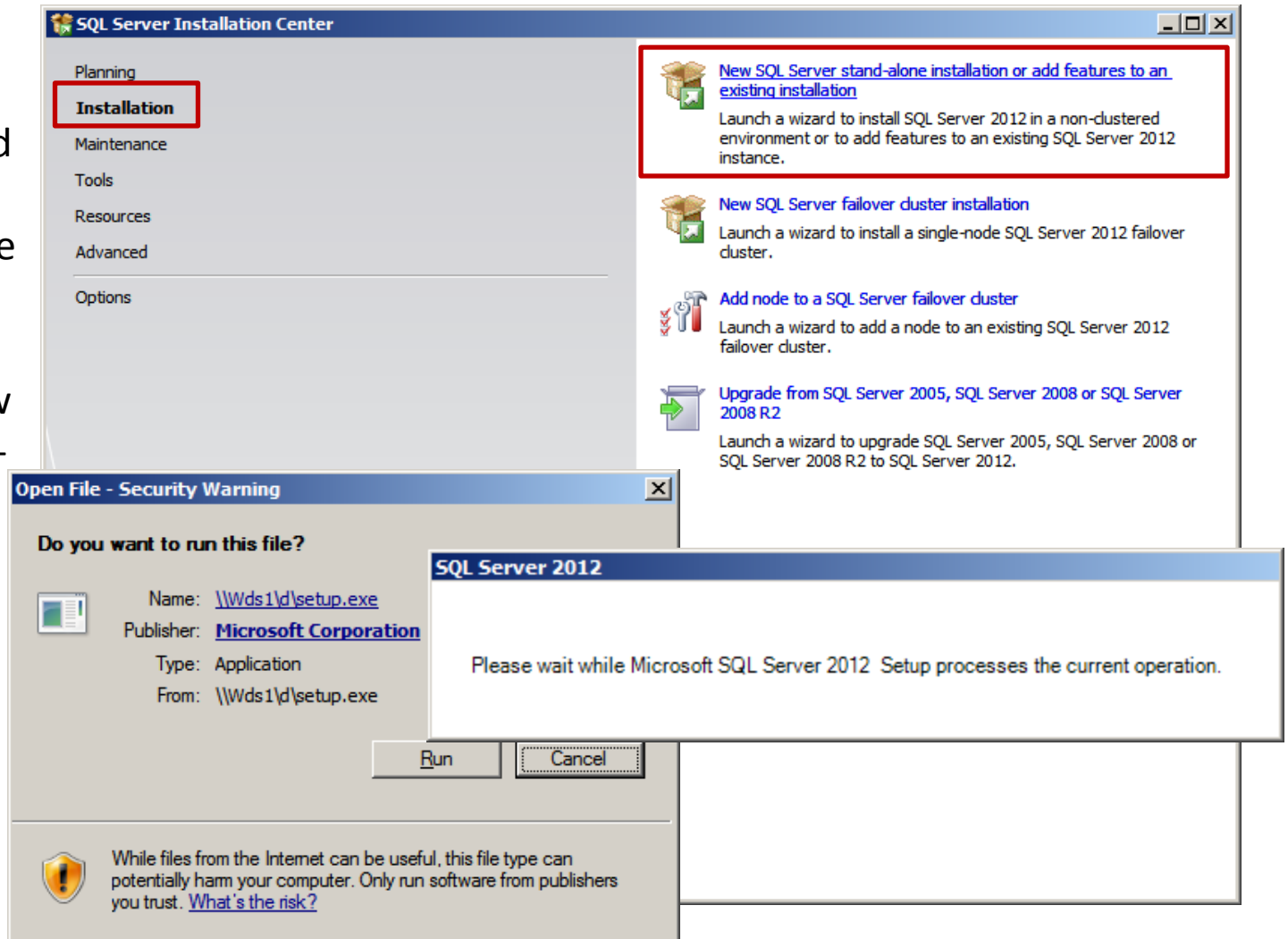
Windows SQL 2012 DVD

We download the Windows 2012 SQL iso file and load it to a DVD. Then, we place the DVD in the optical drive and view the files. We select the setup applications.



SQL Server Installation Center

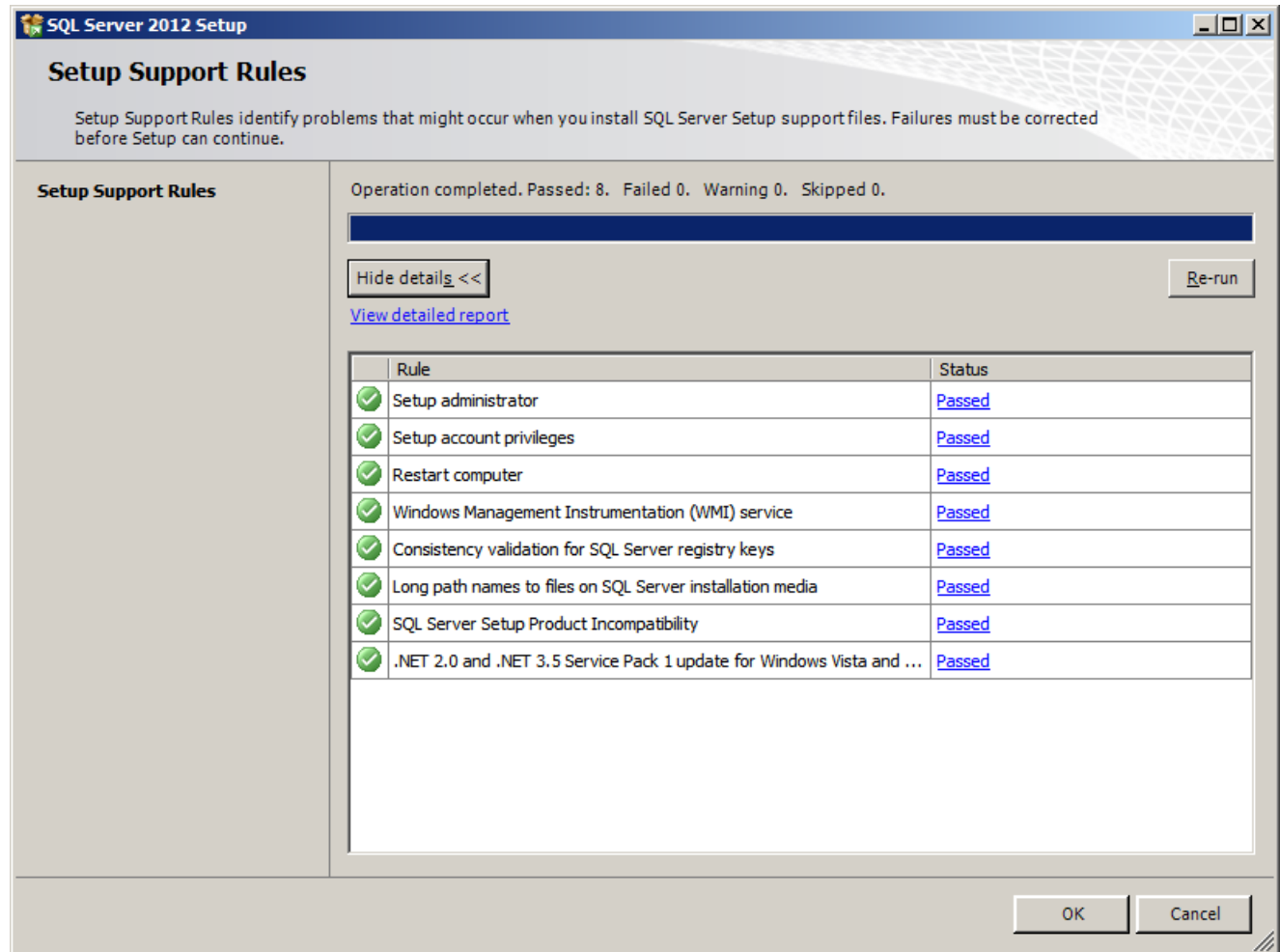
In the SQL Server Installation Center, we should click on Installation on the left side of the dialog box and then we pick New SQL Server stand-alone installation on the right side of the window.



Setup Support Roles

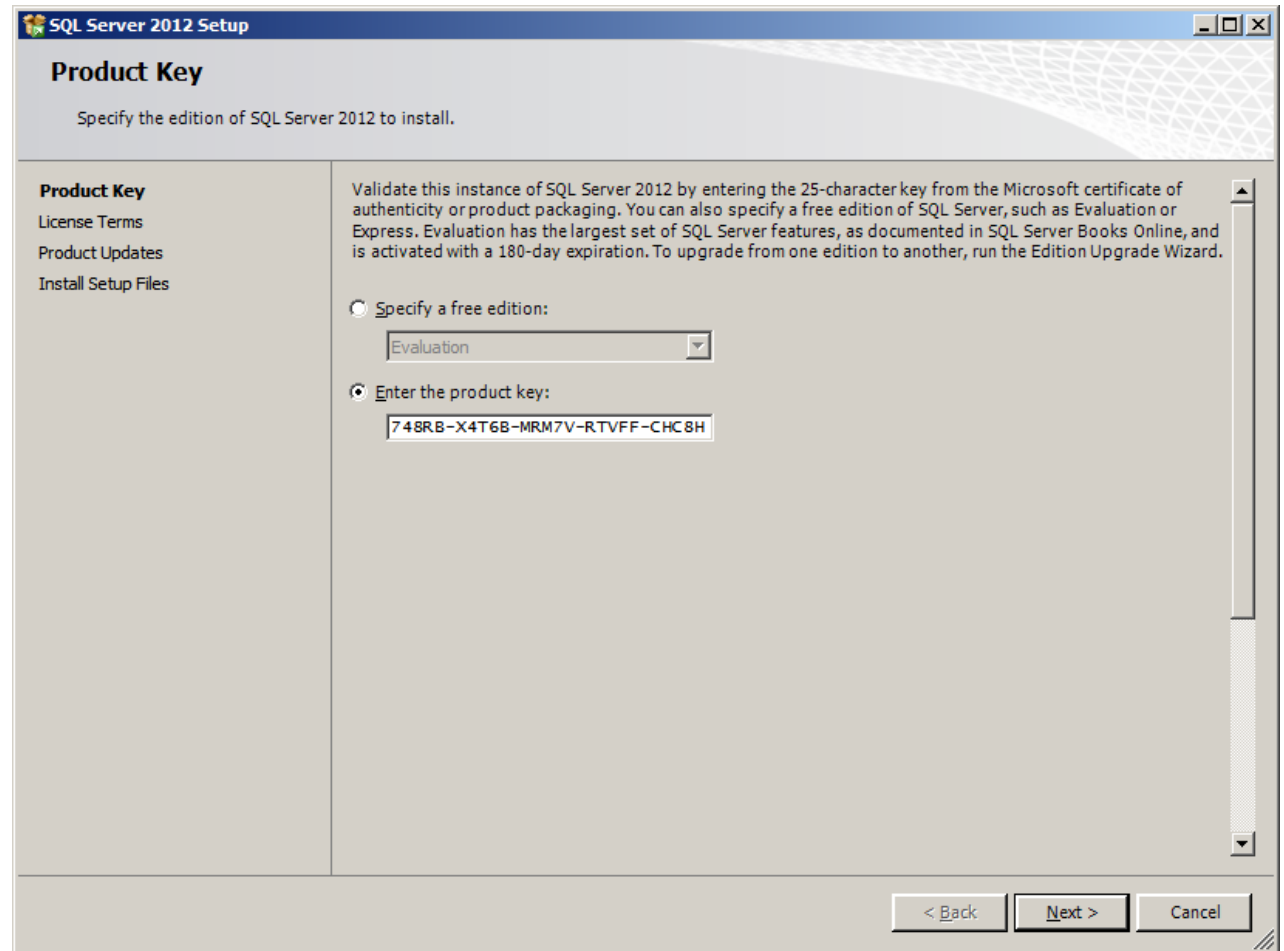
On the Setup Support Rules page, we see the results of eight operations. We want each of them to pass.

We then press OK to continue.



Product Key

We enter the product key of the software.



The screenshot shows the 'SQL Server 2012 Setup' window with the 'Product Key' tab selected. The window title bar reads 'SQL Server 2012 Setup'. The main heading is 'Product Key' with the instruction 'Specify the edition of SQL Server 2012 to install.' Below this, a sidebar on the left lists 'Product Key', 'License Terms', 'Product Updates', and 'Install Setup Files'. The main area contains a text block explaining that the user can validate the instance by entering a 25-character key or specify a free edition. Two radio buttons are present: 'Specify a free edition:' (unselected) and 'Enter the product key:' (selected). The 'Specify a free edition:' option has a dropdown menu currently showing 'Evaluation'. The 'Enter the product key:' option has a text box containing the key '748RB-X4T6B-MRM7V-RTVFF-CHC8H'. At the bottom right, there are three buttons: '< Back', 'Next >', and 'Cancel'.

SQL Server 2012 Setup

Product Key

Specify the edition of SQL Server 2012 to install.

Product Key
License Terms
Product Updates
Install Setup Files

Validate this instance of SQL Server 2012 by entering the 25-character key from the Microsoft certificate of authenticity or product packaging. You can also specify a free edition of SQL Server, such as Evaluation or Express. Evaluation has the largest set of SQL Server features, as documented in SQL Server Books Online, and is activated with a 180-day expiration. To upgrade from one edition to another, run the Edition Upgrade Wizard.

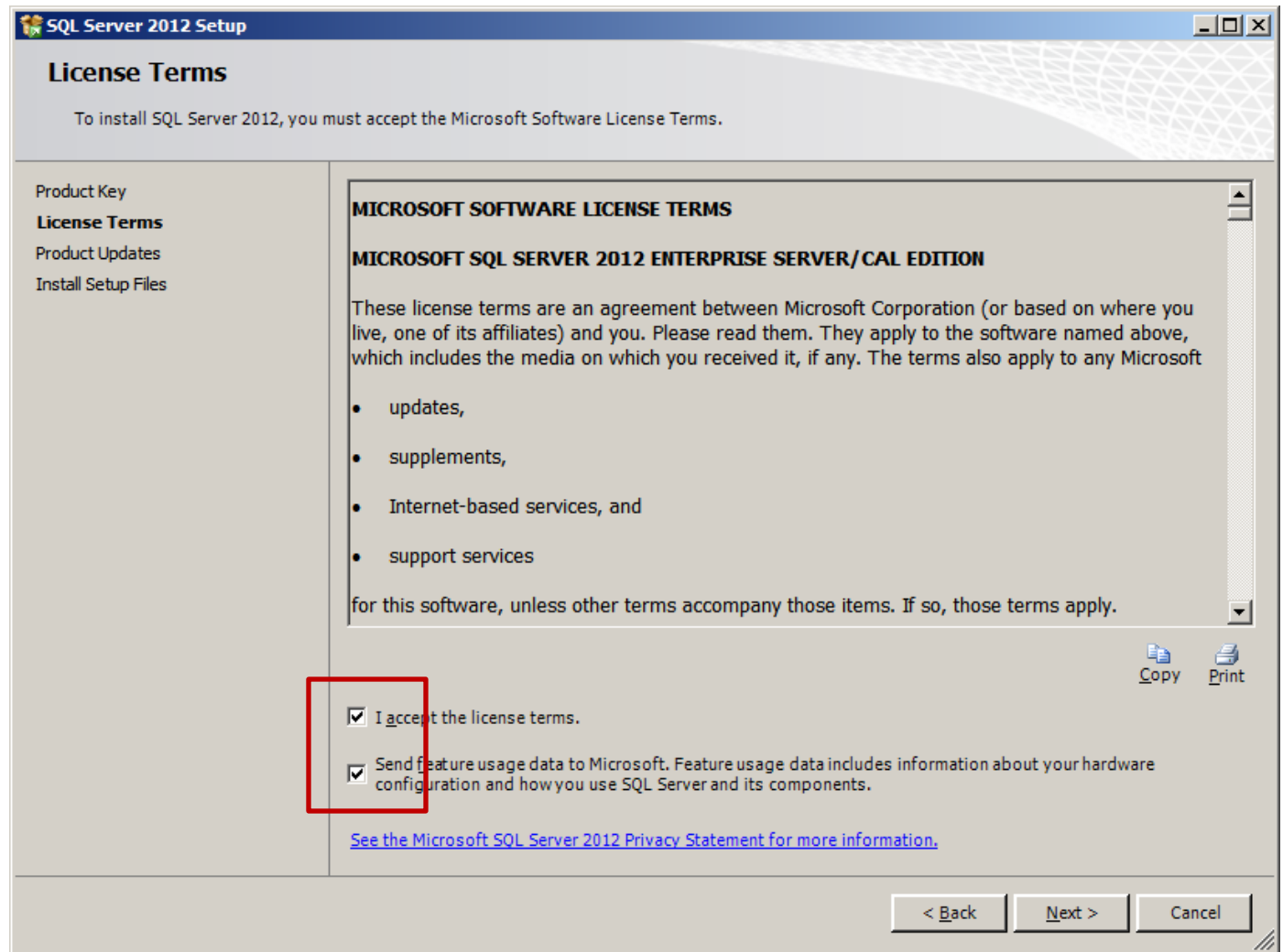
☐ Specify a free edition:
Evaluation

☒ Enter the product key:
748RB-X4T6B-MRM7V-RTVFF-CHC8H

< Back Next > Cancel

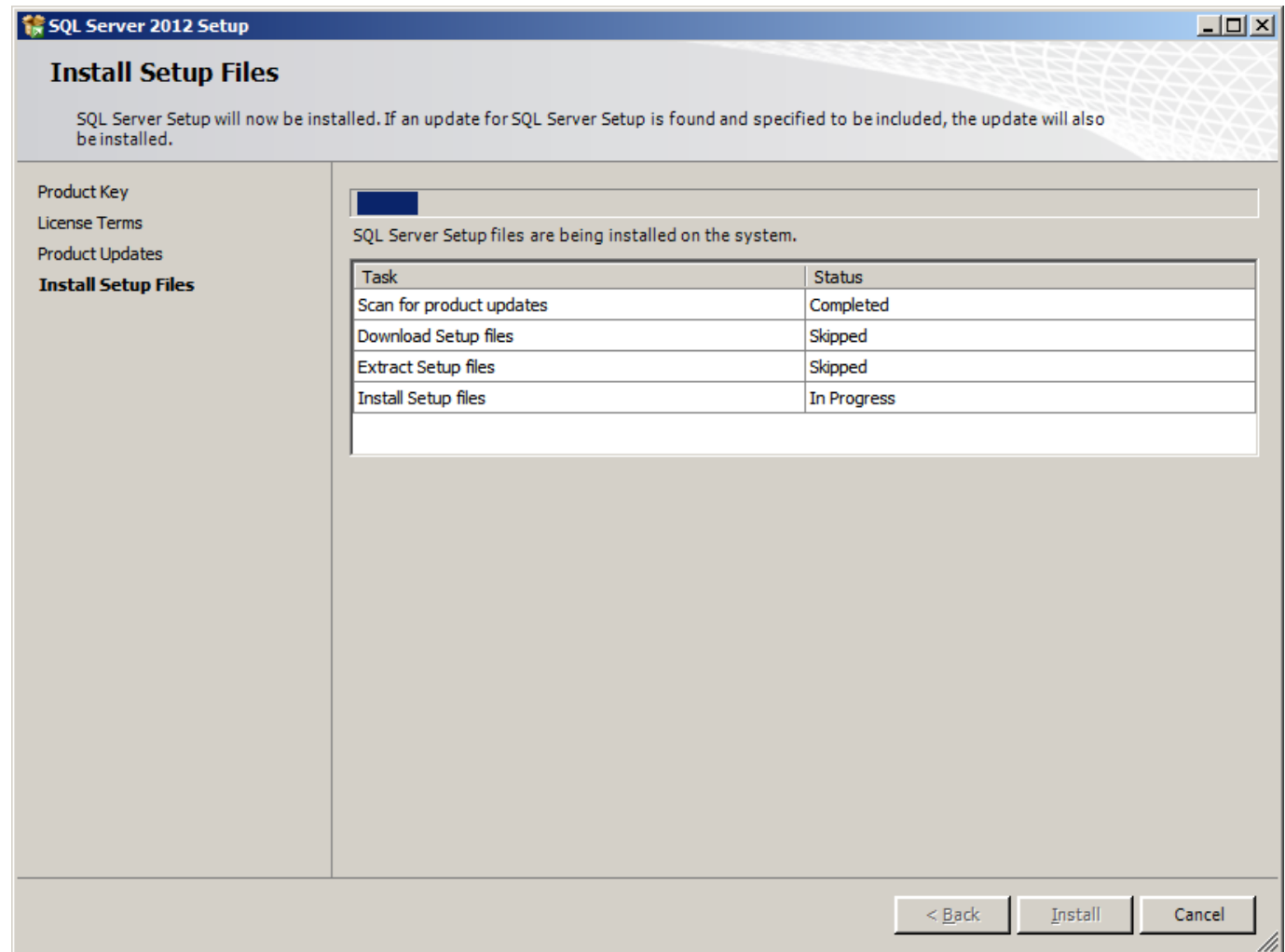
License Terms

Next, we except the license terms and we will approve sending usage data to Microsoft.



Install Setup Files

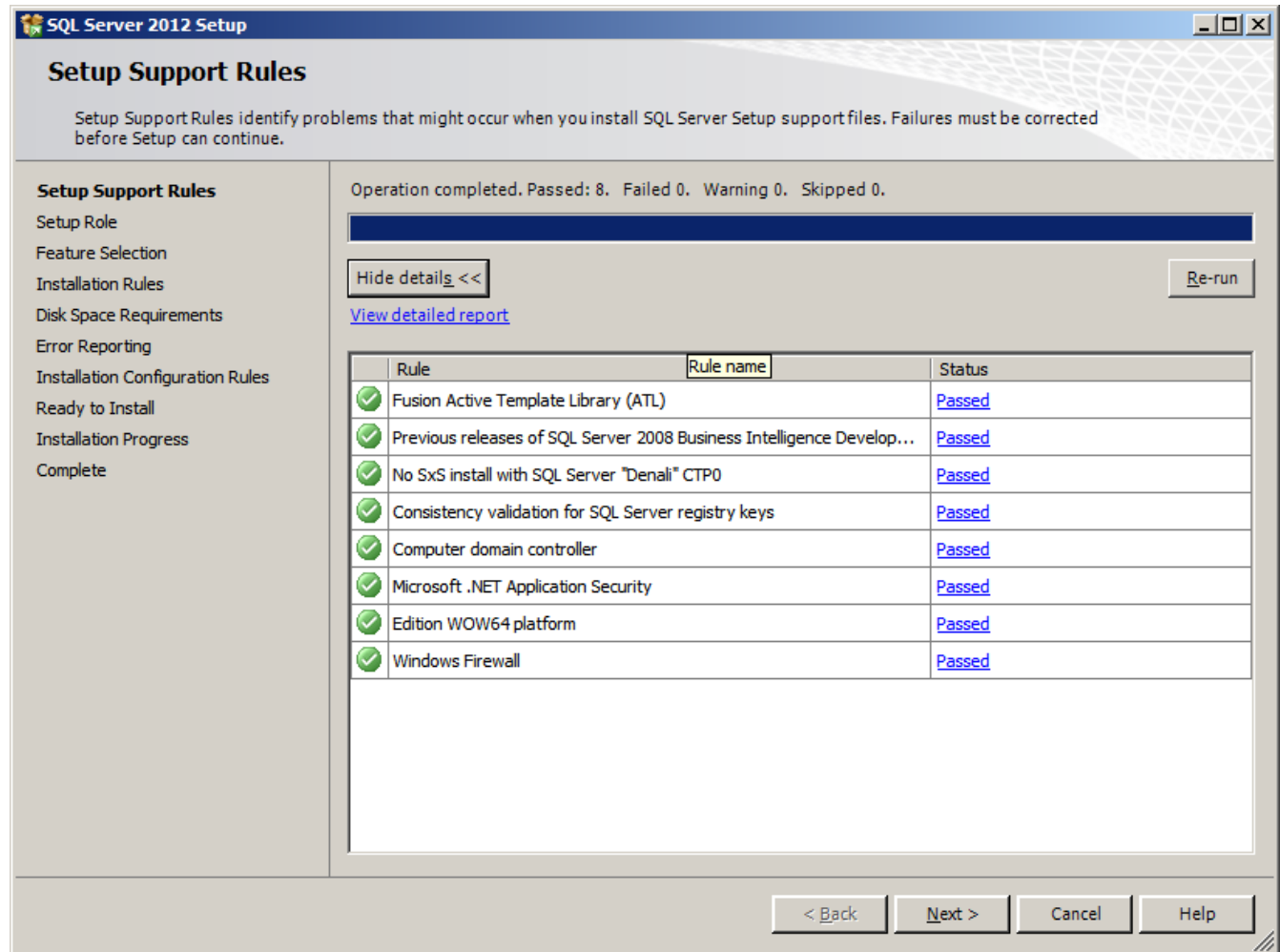
Next, the setup files are installed.



Setup Support Rules

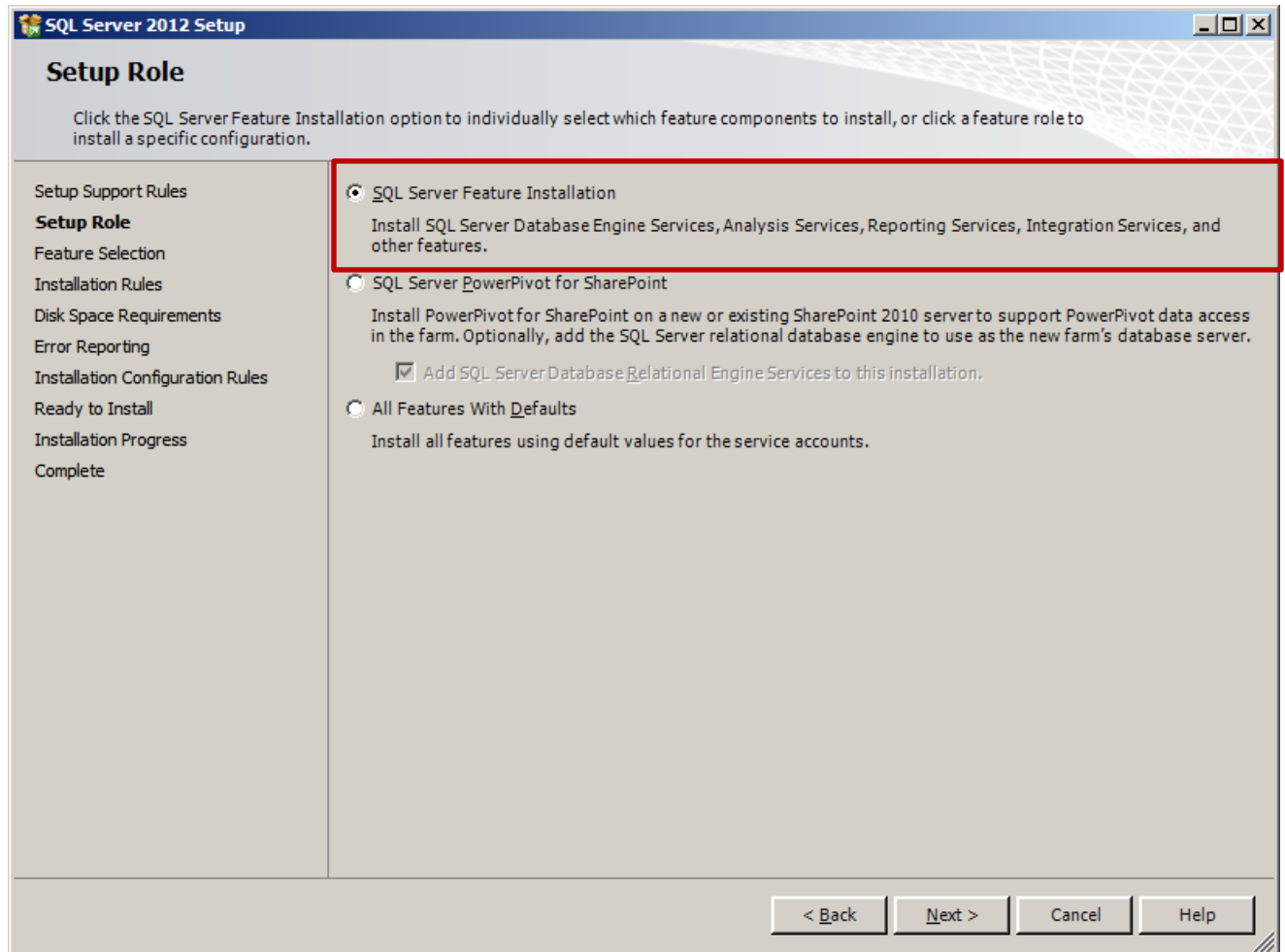
On the Setup Support Rules page, we see the results of eight operations. We want each of them to pass.

We then press OK to continue.



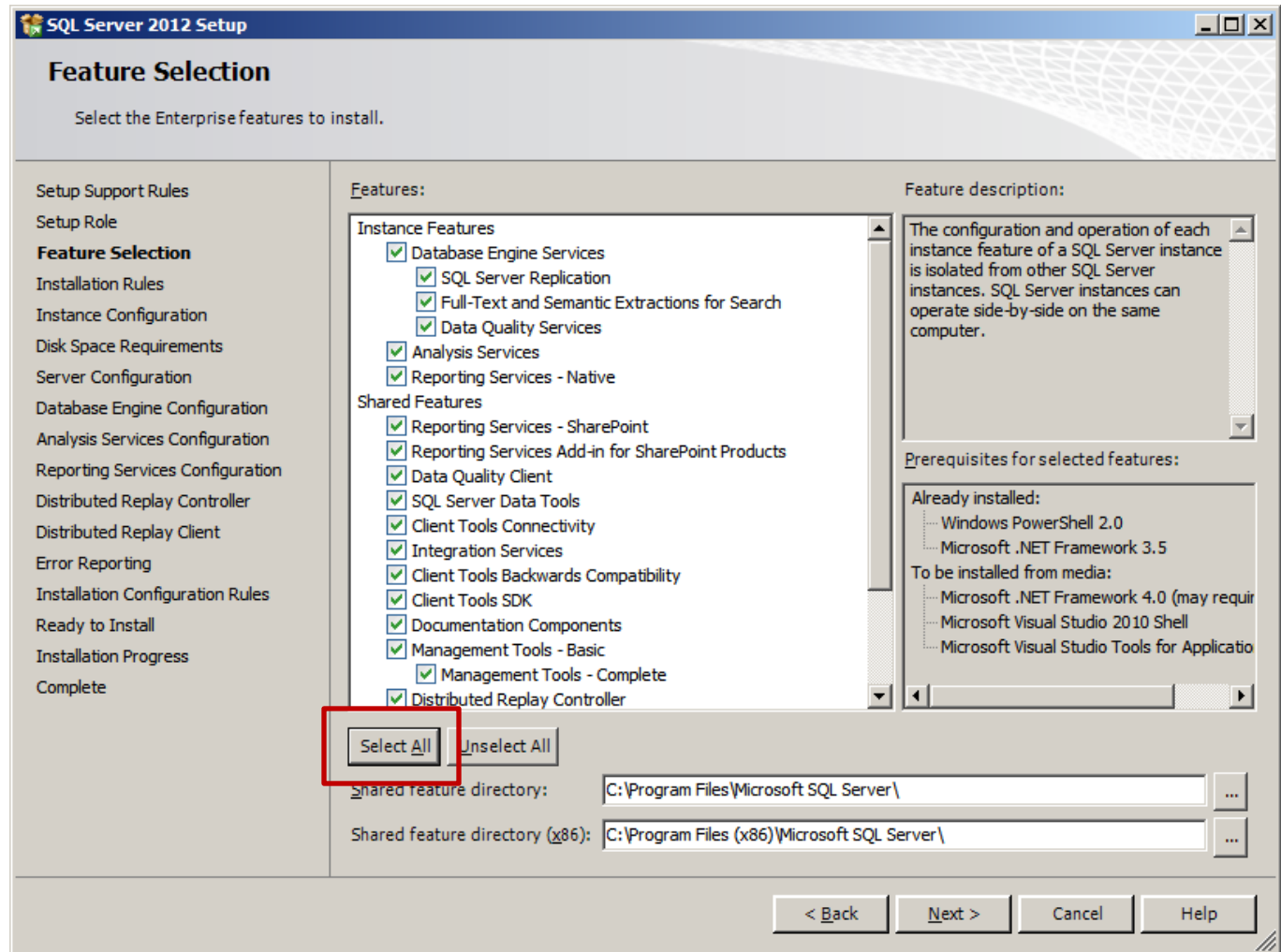
Setup Role

We choose SQL Server Feature Installation.



Feature Selection

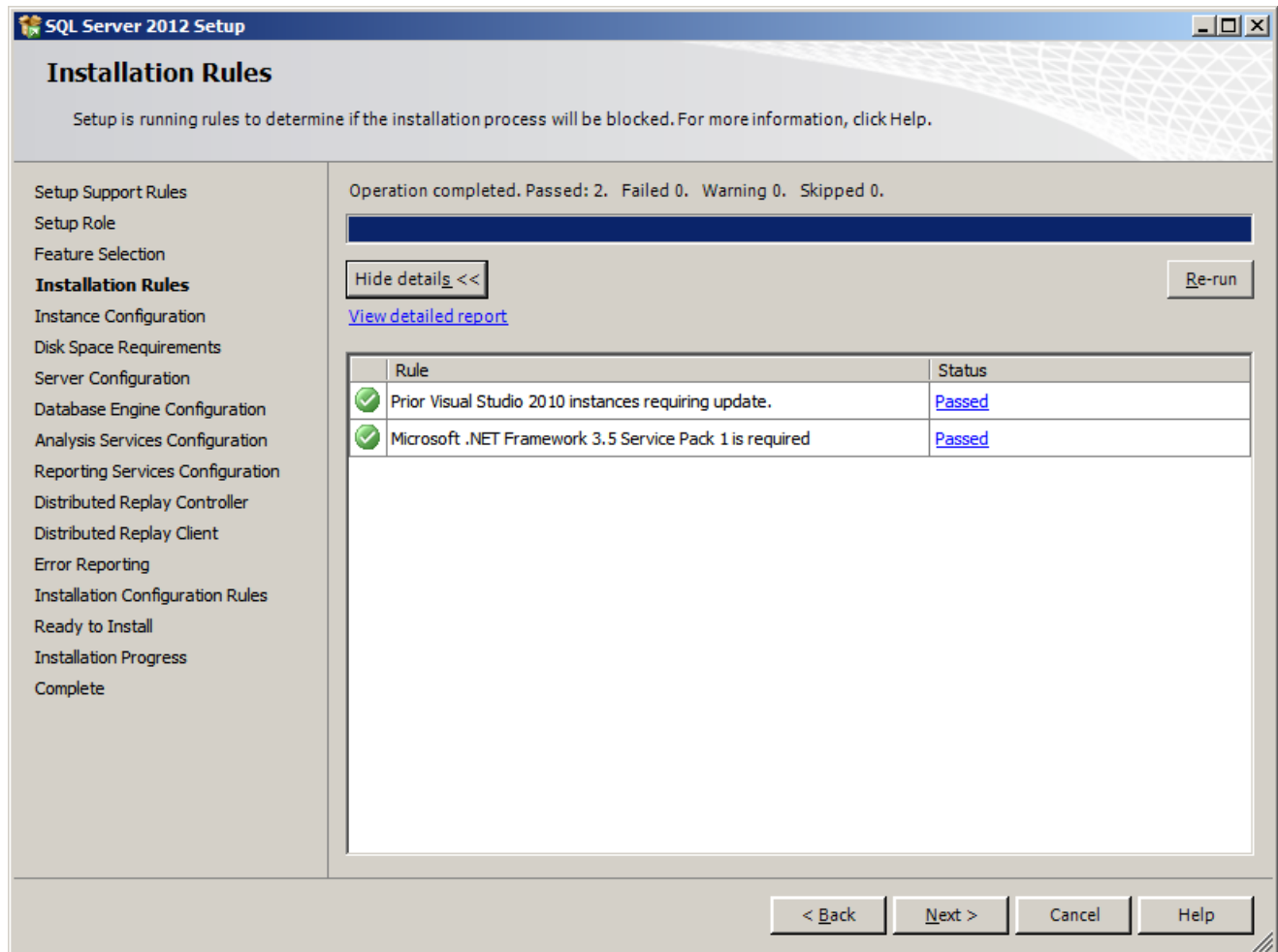
We will pick the Select All button and then push the Next button.



Installation Rules

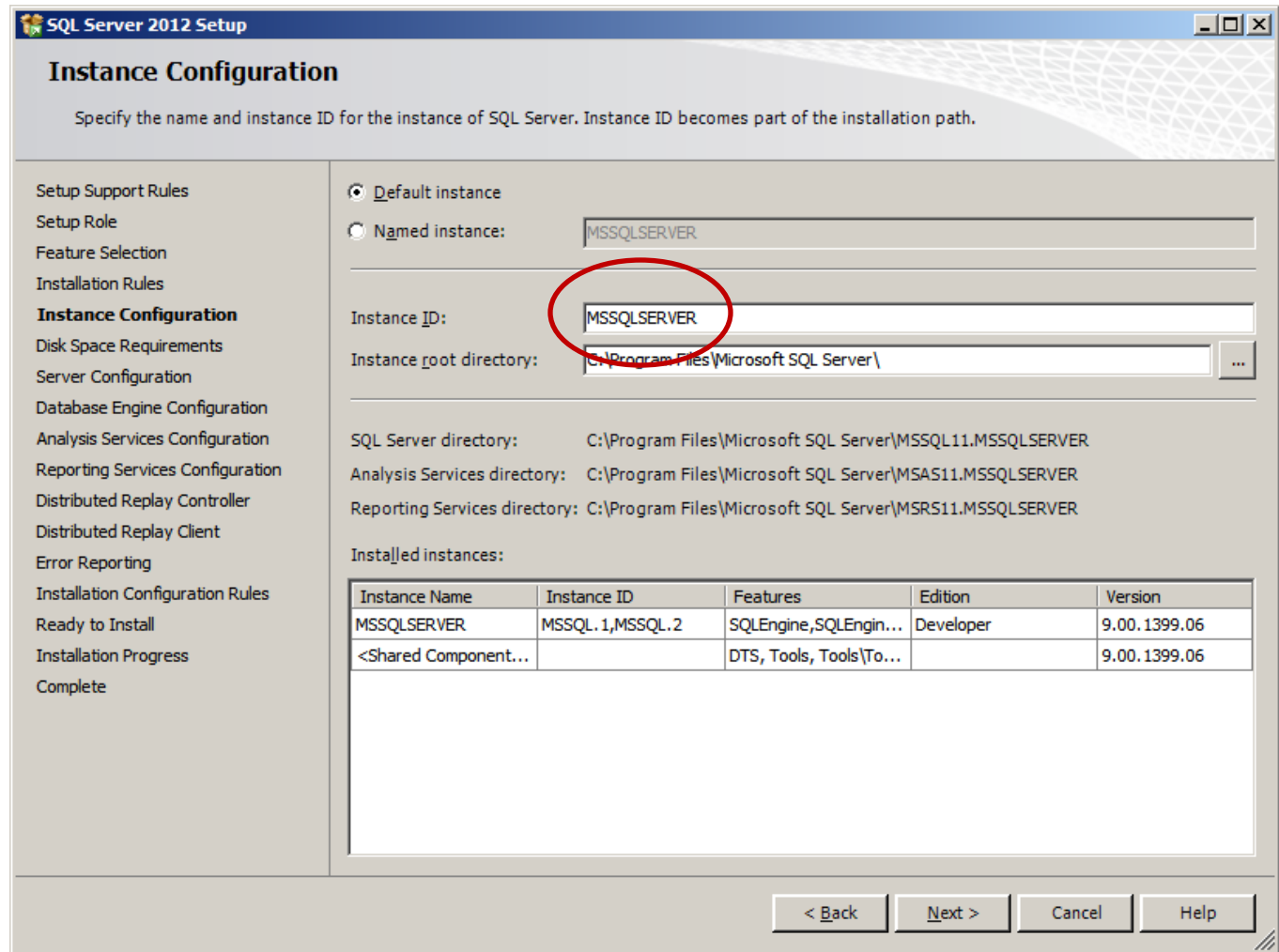
On the Installation Rules page, we see the results of two operations. We want each of them to pass.

We then press Next to advance.



Instance Configuration

Give the SQL server an unique ID and press next.



SQL Server 2012 Setup

Instance Configuration

Specify the name and instance ID for the instance of SQL Server. Instance ID becomes part of the installation path.

☒ **Default instance**

☐ **Named instance:**

Instance **I**D:

Instance **r**oot directory: ...

SQL Server directory: C:\Program Files\Microsoft SQL Server\MSSQL11.MSSQLSERVER

Analysis Services directory: C:\Program Files\Microsoft SQL Server\MSAS11.MSSQLSERVER

Reporting Services directory: C:\Program Files\Microsoft SQL Server\MSRS11.MSSQLSERVER

Installed instances:

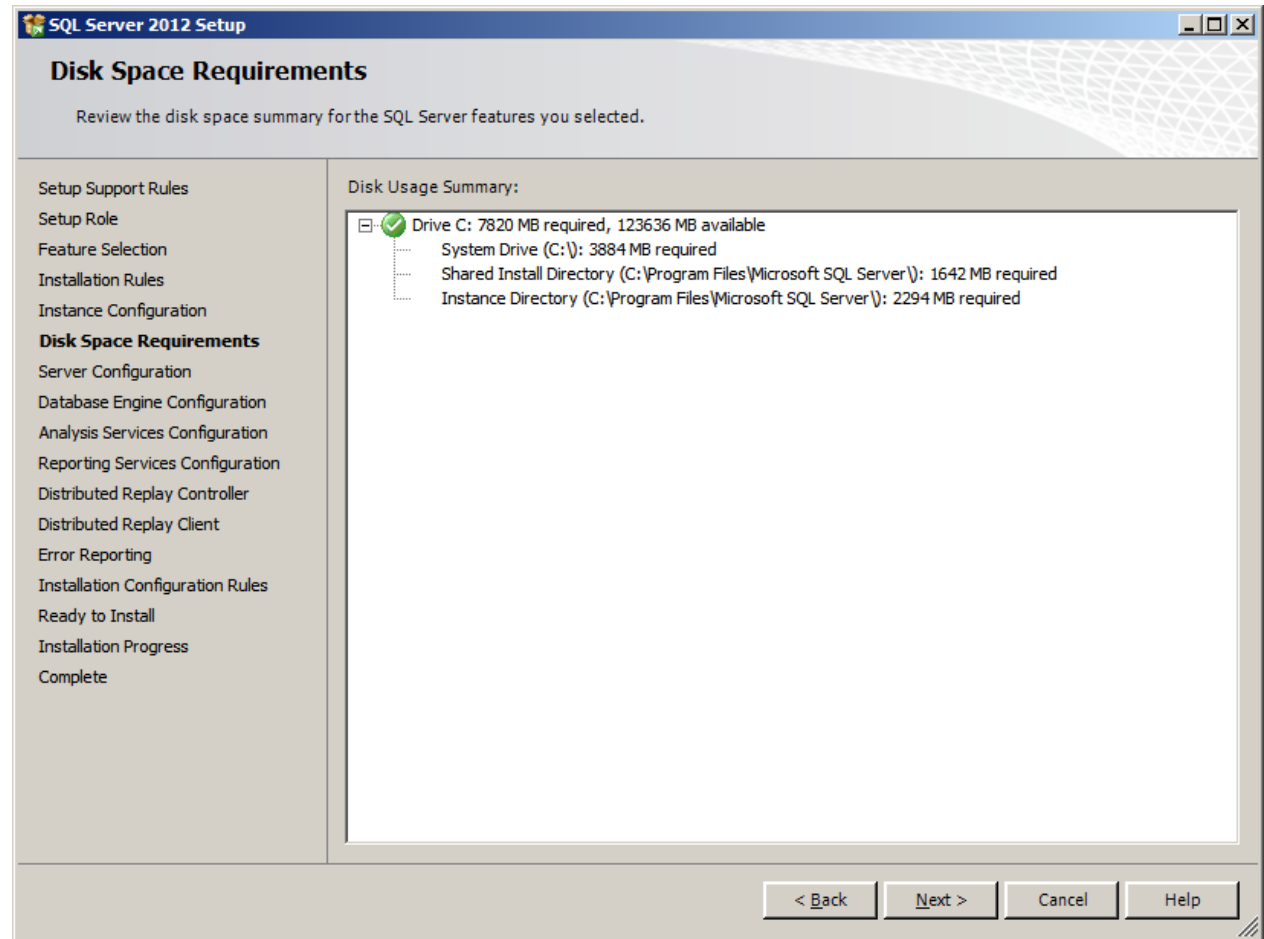
Instance Name	Instance ID	Features	Edition	Version
MSSQLSERVER	MSSQL.1,MSSQL.2	SQLEngine,SQLEngin...	Developer	9.00.1399.06
<Shared Component...		DTS, Tools, Tools\To...		9.00.1399.06

< Back Next > Cancel Help

Disk Space Requirement

On the Disk Space Requirement page, we see the results of the single operations. We want each of them to pass.

We then press Next to go on.



Server Configuration

We check the services on the Service Account tab.

SQL Server 2012 Setup

Server Configuration

Specify the service accounts and collation configuration.

Setup Support Rules
Setup Role
Feature Selection
Installation Rules
Instance Configuration
Disk Space Requirements
Server Configuration
Database Engine Configuration
Analysis Services Configuration
Reporting Services Configuration
Distributed Replay Controller
Distributed Replay Client
Error Reporting
Installation Configuration Rules
Ready to Install
Installation Progress
Complete

Service Accounts | Collation

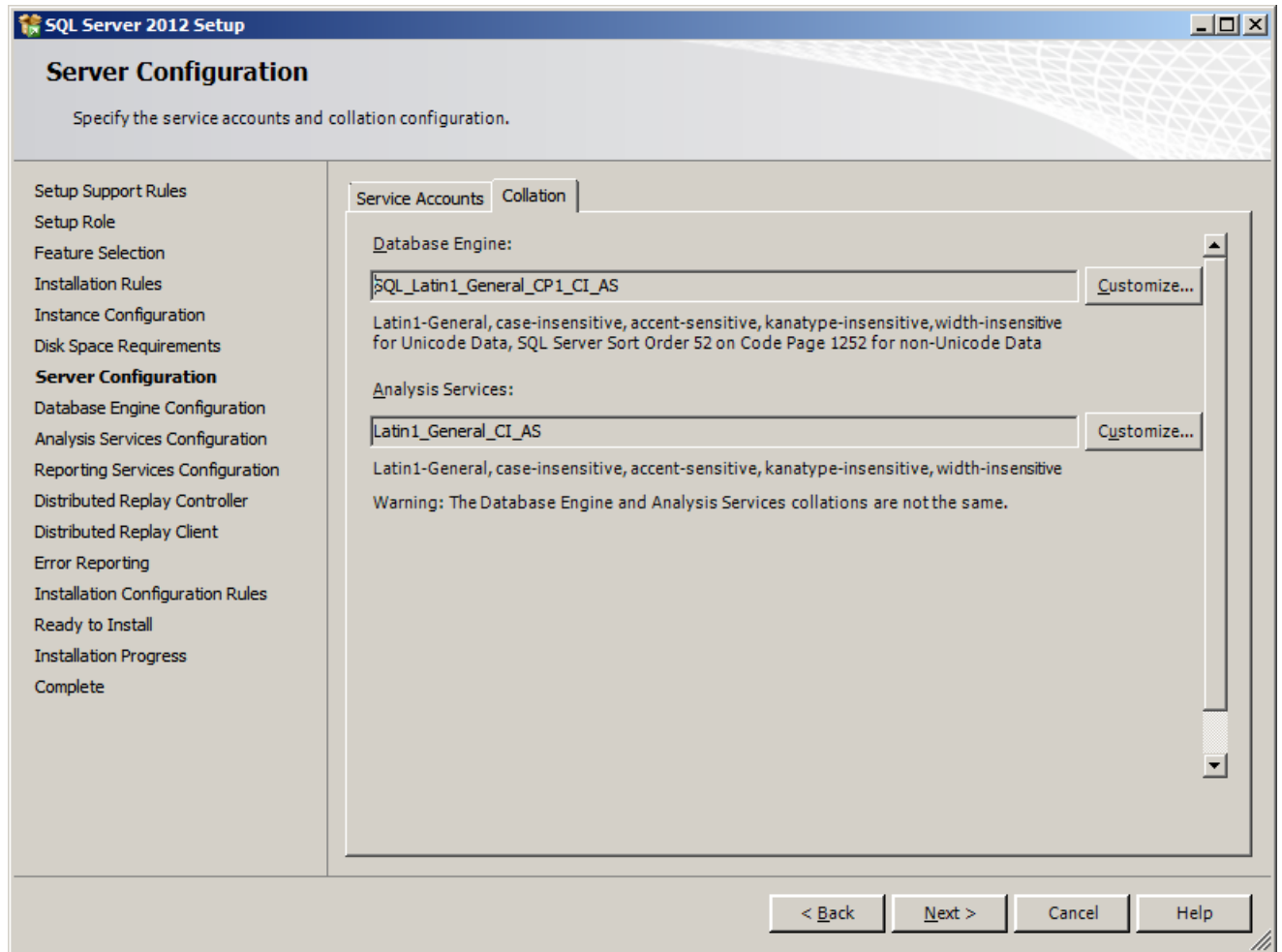
Microsoft recommends that you use a separate account for each SQL Server service.

Service	Account Name	Password	Startup Type
SQL Server Agent	NT AUTHORITY\NETWORK...		Manual
SQL Server Database Engine	NT AUTHORITY\NETWORK...		Automatic
SQL Server Analysis Services	NT AUTHORITY\NETWORK...		Automatic
SQL Server Reporting Services	NT AUTHORITY\NETWORK...		Automatic
SQL Server Integration Services 11.0	NT AUTHORITY\NETWORK...		Automatic
SQL Server Distributed Replay Client	NT AUTHORITY\NETWORK...		Manual
SQL Server Distributed Replay Contro...	NT AUTHORITY\NETWORK...		Manual
SQL Full-text Filter Daemon Launcher	NT AUTHORITY\LOCAL SE...		Manual
SQL Server Browser	NT AUTHORITY\SYSTEM		Automatic

< Back Next > Cancel Help

Server Configuration

We check the Collation tab.



Password

We enter and confirm the server password. We also add the current user by pressing that same name button.

SQL Server 2012 Setup

Database Engine Configuration

Specify Database Engine authentication security mode, administrators and data directories.

Setup Support Rules
Setup Role
Feature Selection
Installation Rules
Instance Configuration
Disk Space Requirements
Server Configuration
Database Engine Configuration
Analysis Services Configuration
Reporting Services Configuration
Distributed Replay Controller
Distributed Replay Client
Error Reporting
Installation Configuration Rules
Ready to Install
Installation Progress
Complete

Server Configuration | Data Directories | FILESTREAM

Specify the authentication mode and administrators for the Database Engine.

Authentication Mode

☐ Windows authentication mode

☒ **Mixed Mode (SQL Server authentication and Windows authentication)**

Specify the password for the SQL Server system administrator (sa) account.

Enter password:

Confirm password:

Specify SQL Server administrators

SQL Server administrators
CCISERVER\Administrator (Administrator)

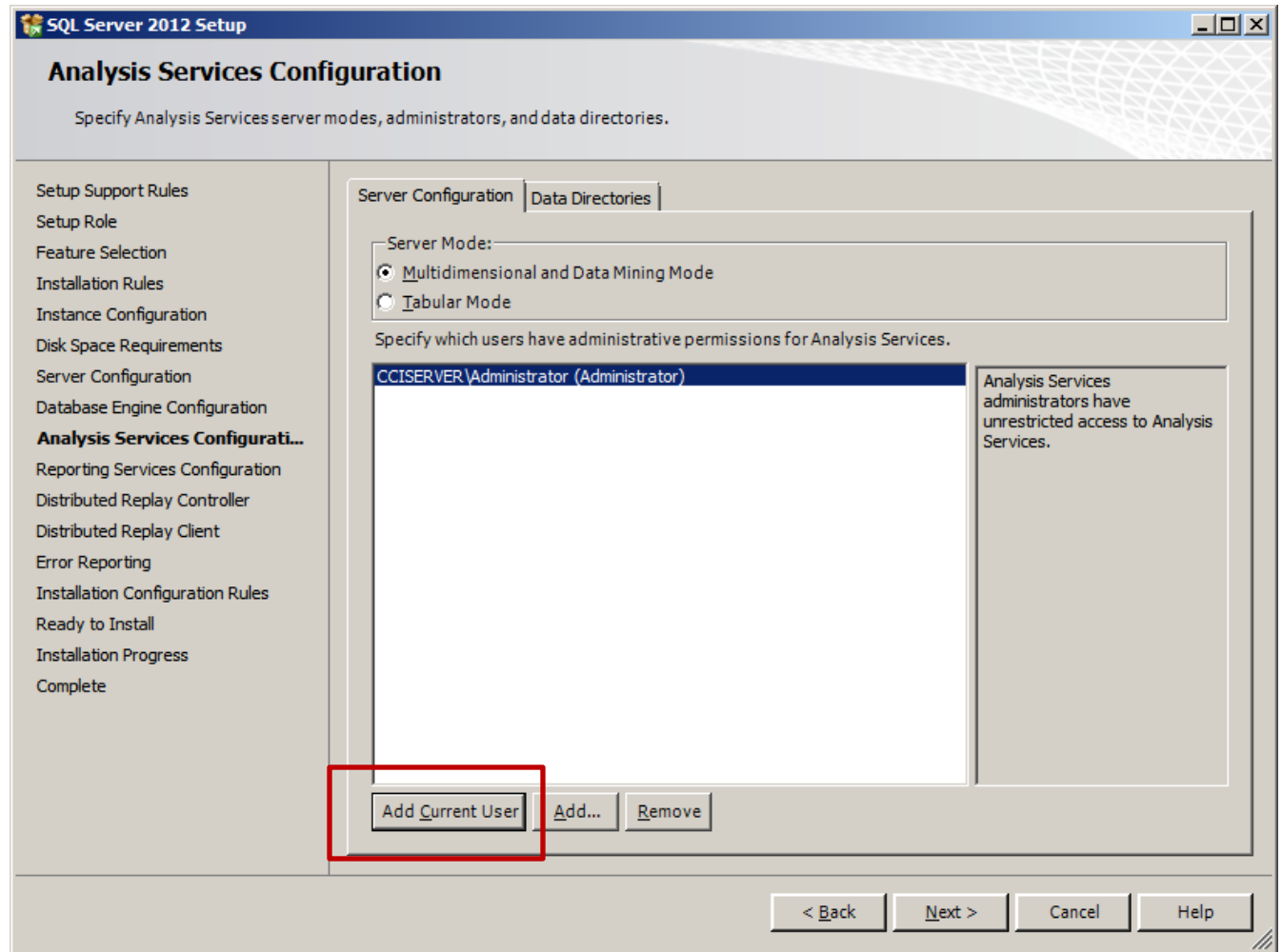
SQL Server administrators have unrestricted access to the Database Engine.

Add Current User Add... Remove

< Back Next > Cancel Help

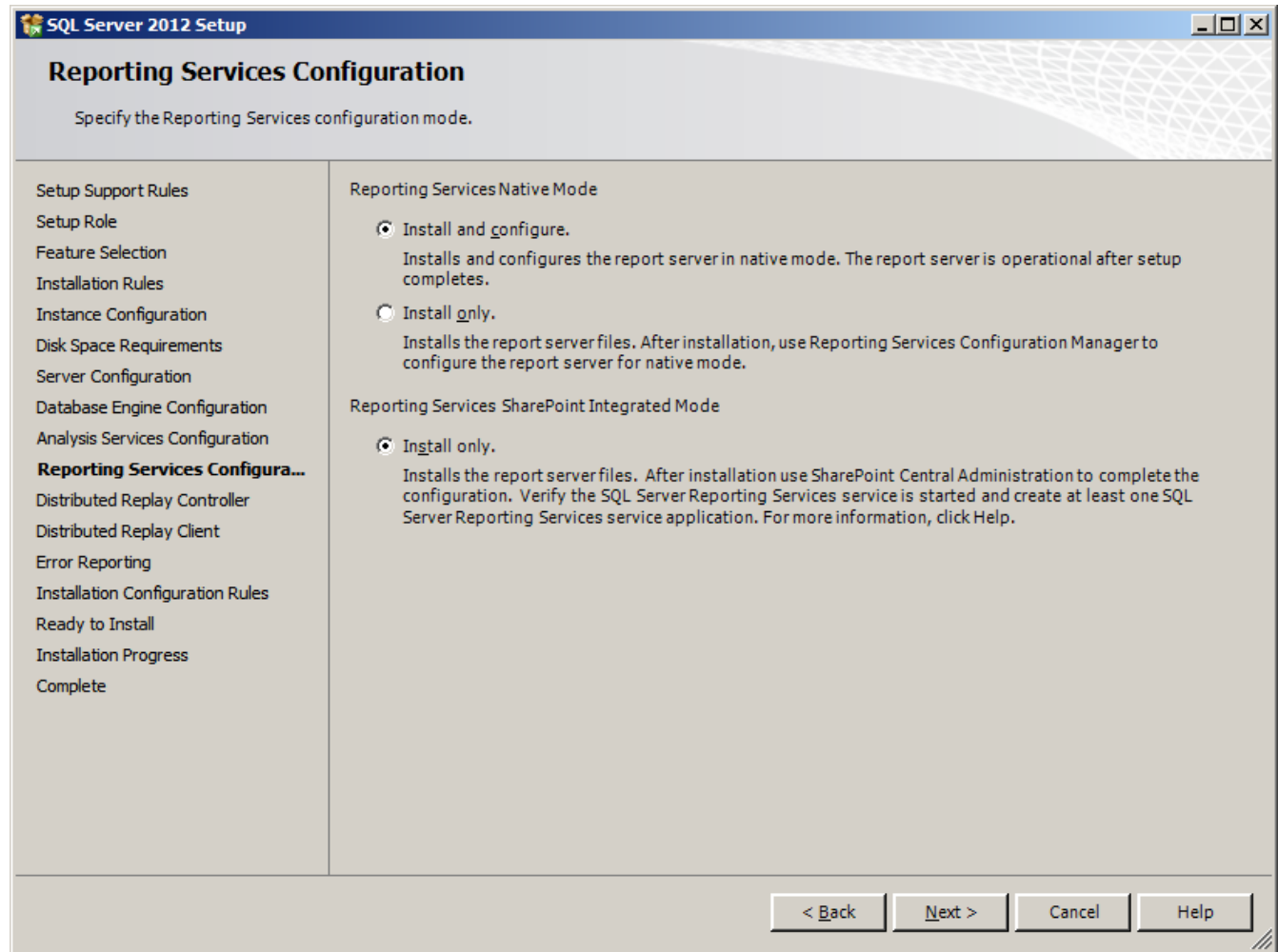
Analysis Services Configuration

We again add the current user by pressing that same name button.



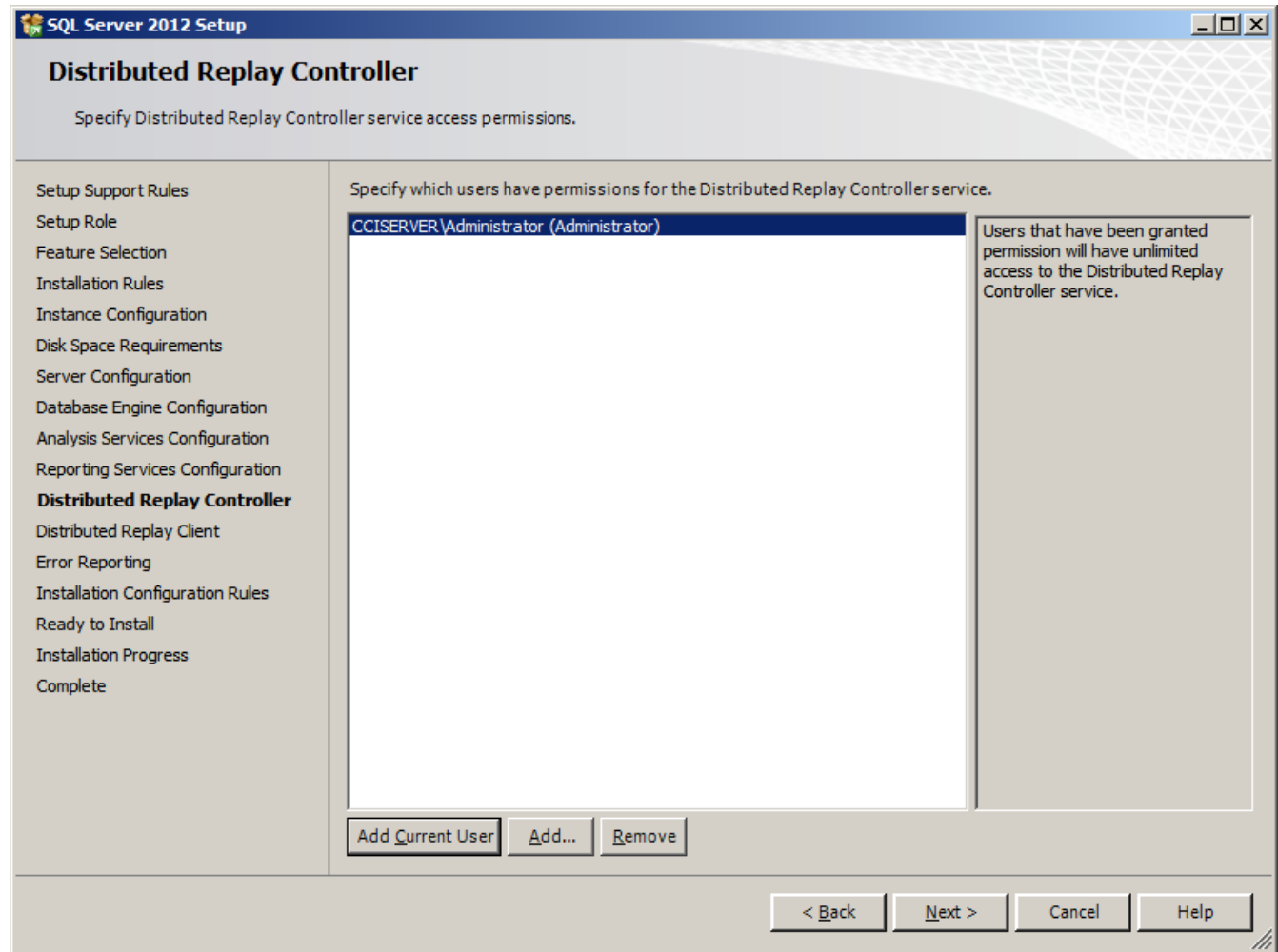
Reporting Services Configuration

We want to opt for install and configure reporting services native mode. We also opt for install only for reporting services SharePoint integrated mode.



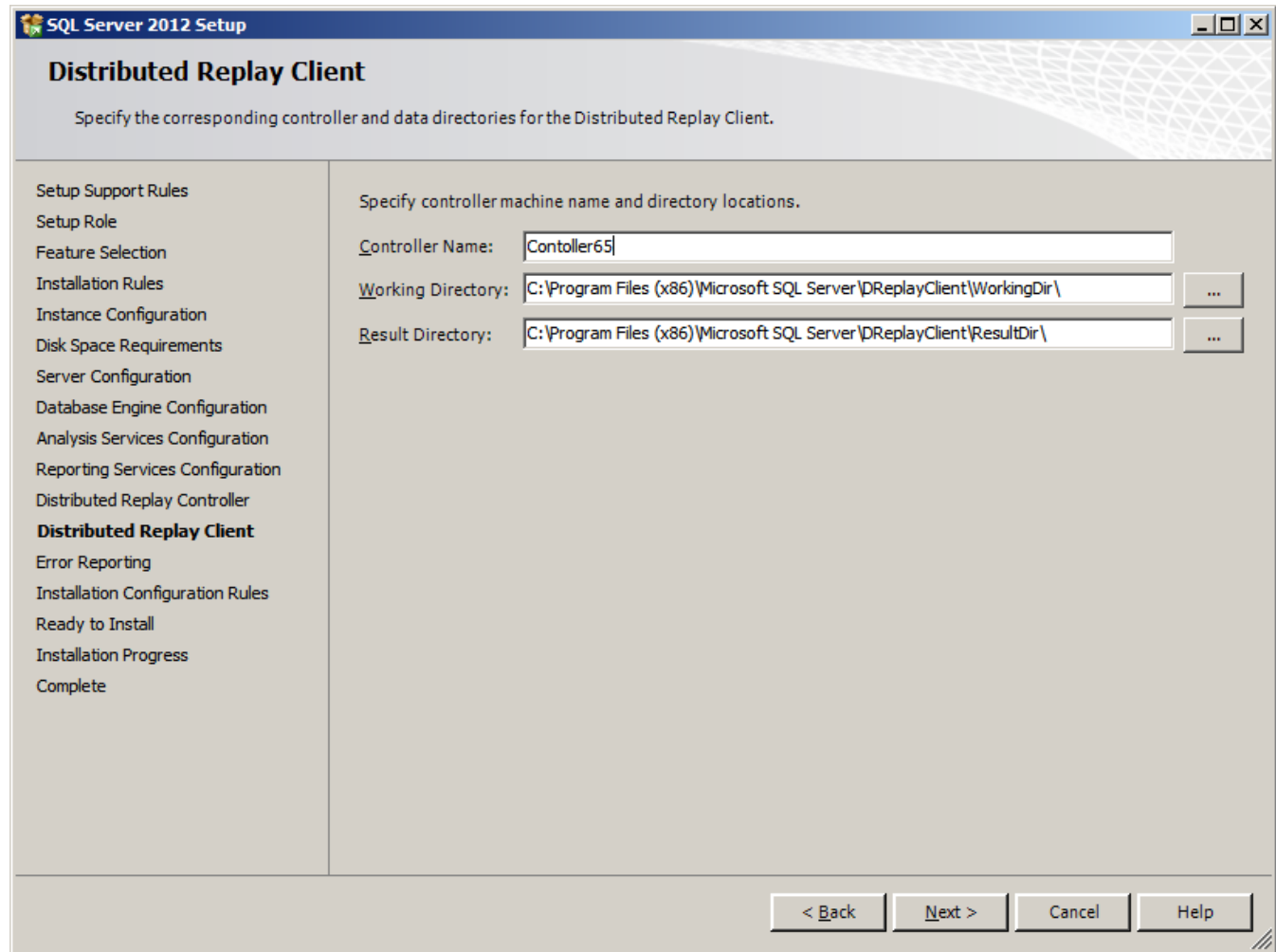
Distributed Replay Controller

We add the current user by pressing that same name button.



Distributed Replay Client

We named our controller “Controller 65”, so we want an unique name.



The screenshot shows the 'SQL Server 2012 Setup' window with the 'Distributed Replay Client' tab selected. The left sidebar lists various setup steps, with 'Distributed Replay Client' highlighted. The main area is titled 'Specify the corresponding controller and data directories for the Distributed Replay Client.' and contains three input fields: 'Controller Name' (set to 'Contoller65'), 'Working Directory' (set to 'C:\Program Files (x86)\Microsoft SQL Server\DReplayClient\WorkingDir\'), and 'Result Directory' (set to 'C:\Program Files (x86)\Microsoft SQL Server\DReplayClient\ResultDir\'). Each directory field has a browse button ('...'). At the bottom, there are four buttons: '< Back', 'Next >', 'Cancel', and 'Help'.

SQL Server 2012 Setup

Distributed Replay Client

Specify the corresponding controller and data directories for the Distributed Replay Client.

Setup Support Rules
Setup Role
Feature Selection
Installation Rules
Instance Configuration
Disk Space Requirements
Server Configuration
Database Engine Configuration
Analysis Services Configuration
Reporting Services Configuration
Distributed Replay Controller
Distributed Replay Client
Error Reporting
Installation Configuration Rules
Ready to Install
Installation Progress
Complete

Specify controller machine name and directory locations.

Controller Name: Contoller65

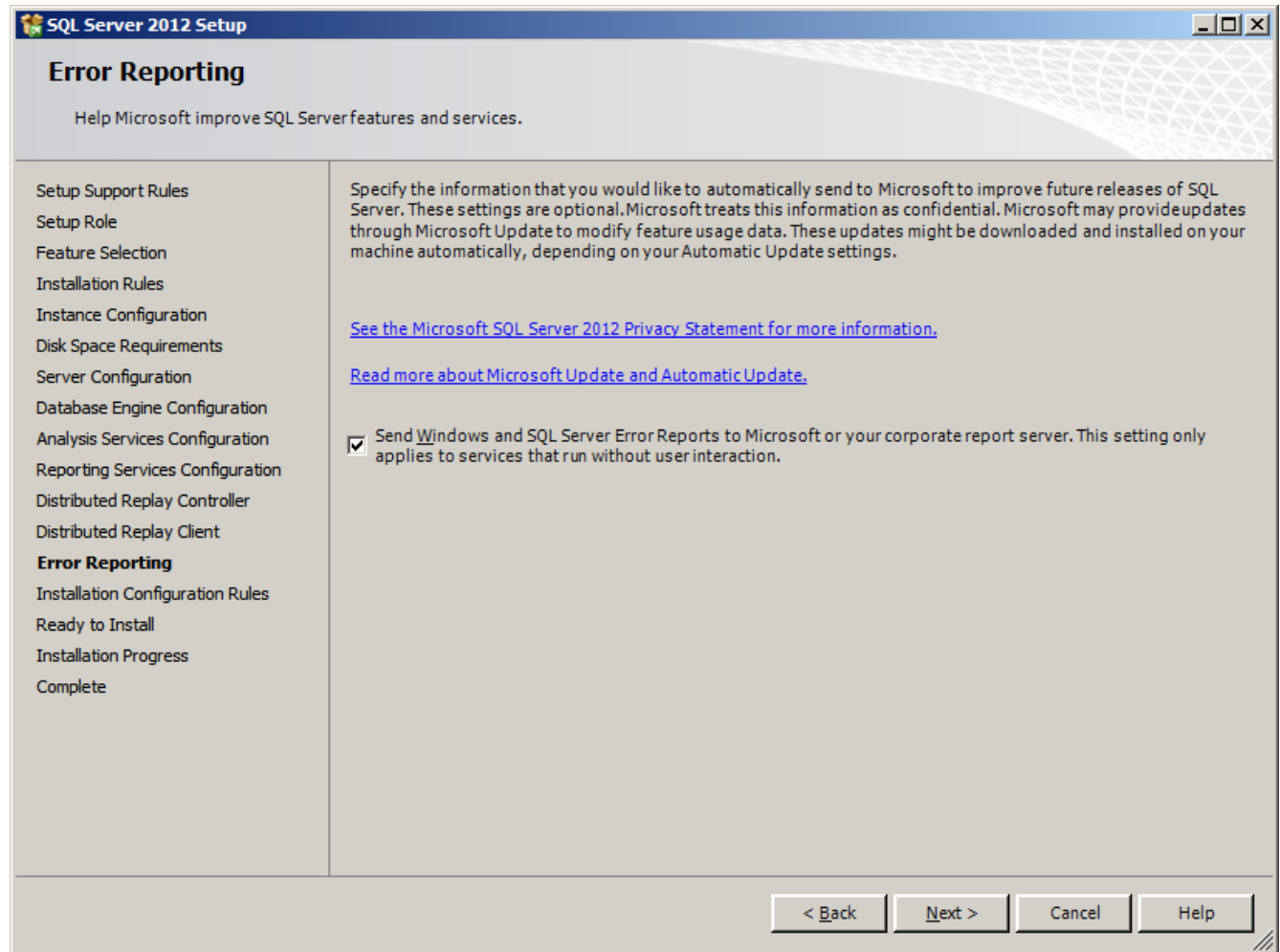
Working Directory: C:\Program Files (x86)\Microsoft SQL Server\DReplayClient\WorkingDir\ ...

Result Directory: C:\Program Files (x86)\Microsoft SQL Server\DReplayClient\ResultDir\ ...

< Back Next > Cancel Help

Error Reporting

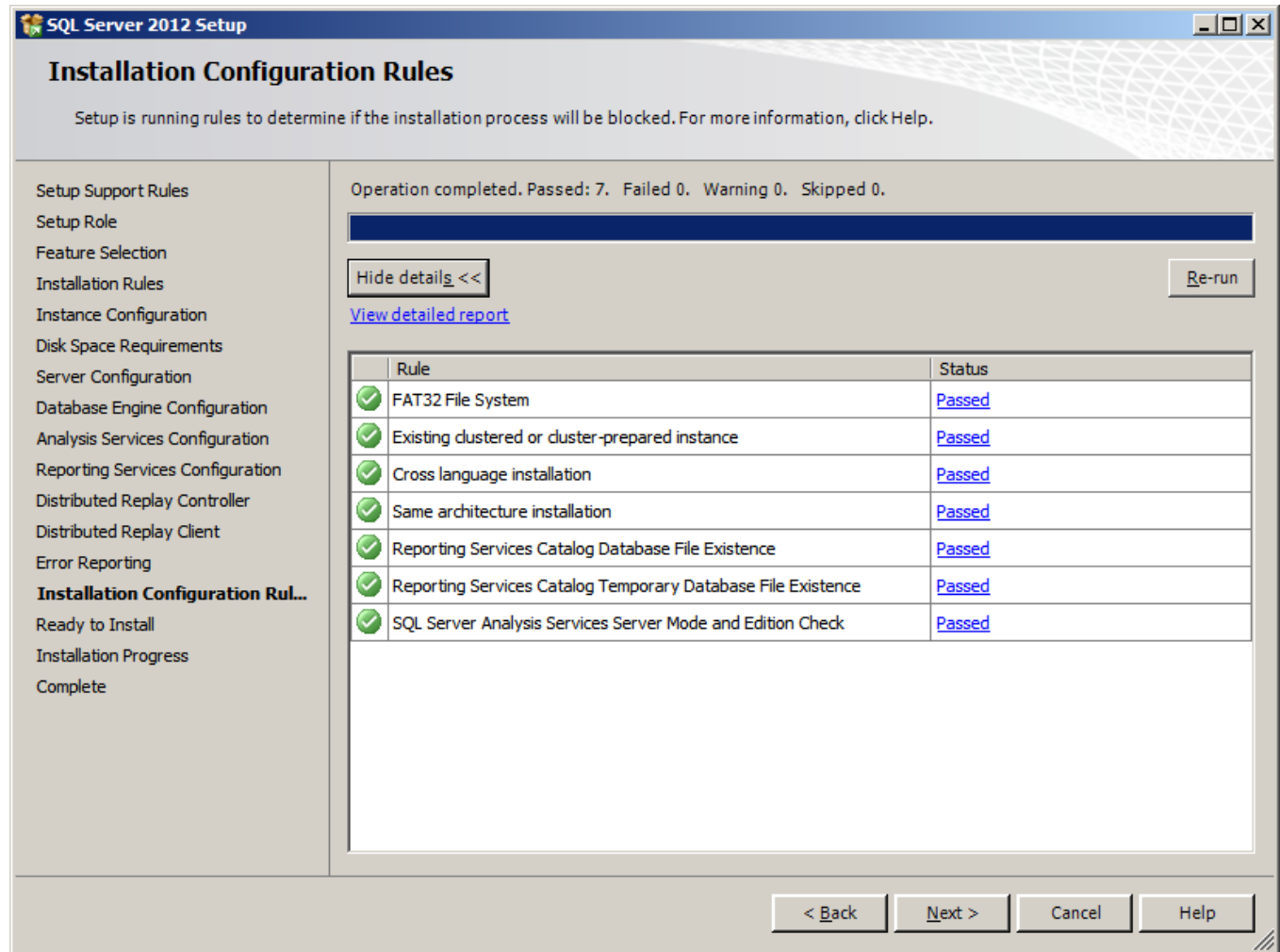
We accept the default and press Next.



Installation Configuration Rules

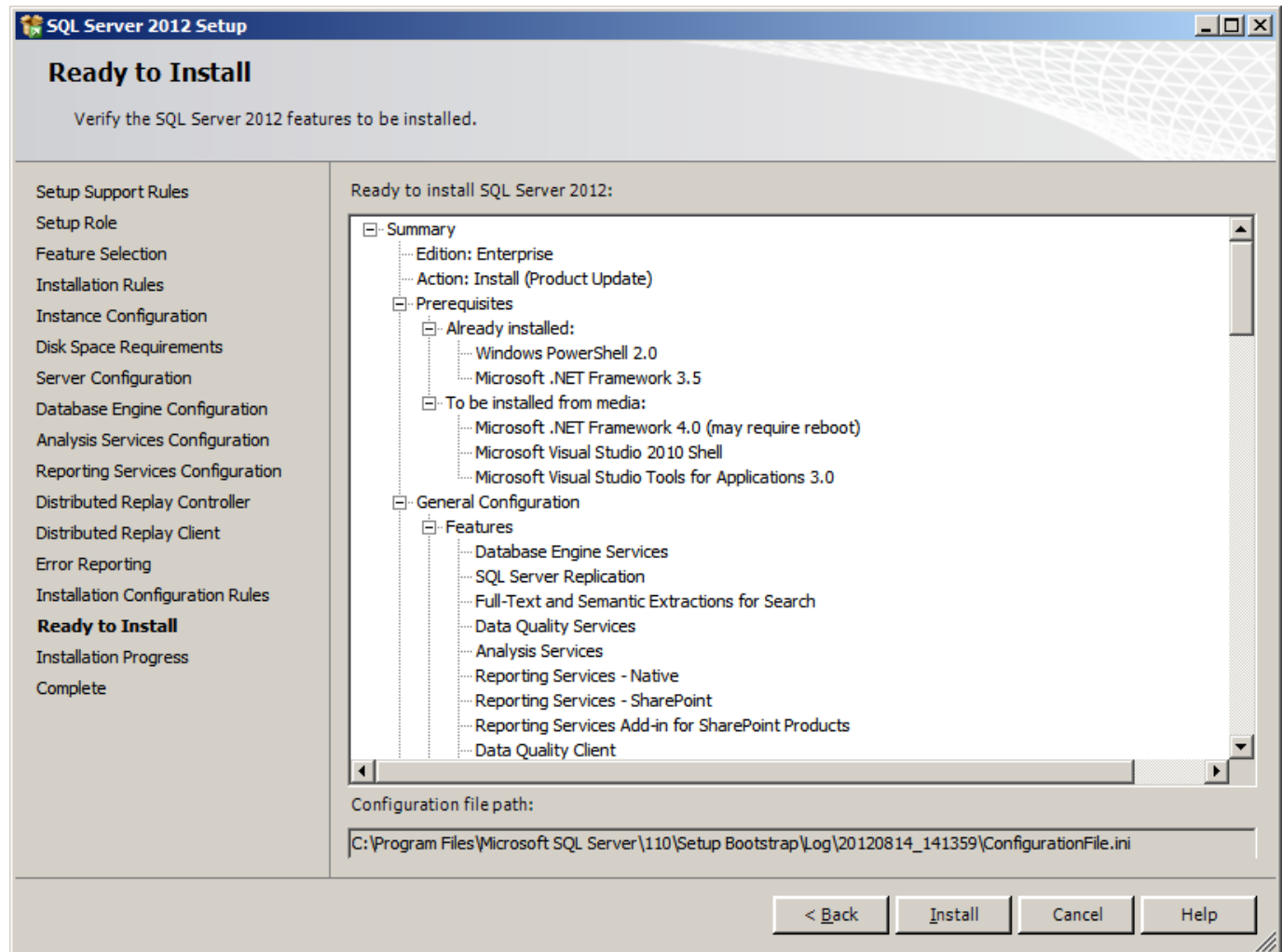
On the Installation Configuration Rules page, we see the results of seven completed operations. We want each of them to pass.

We then press Next to advance.



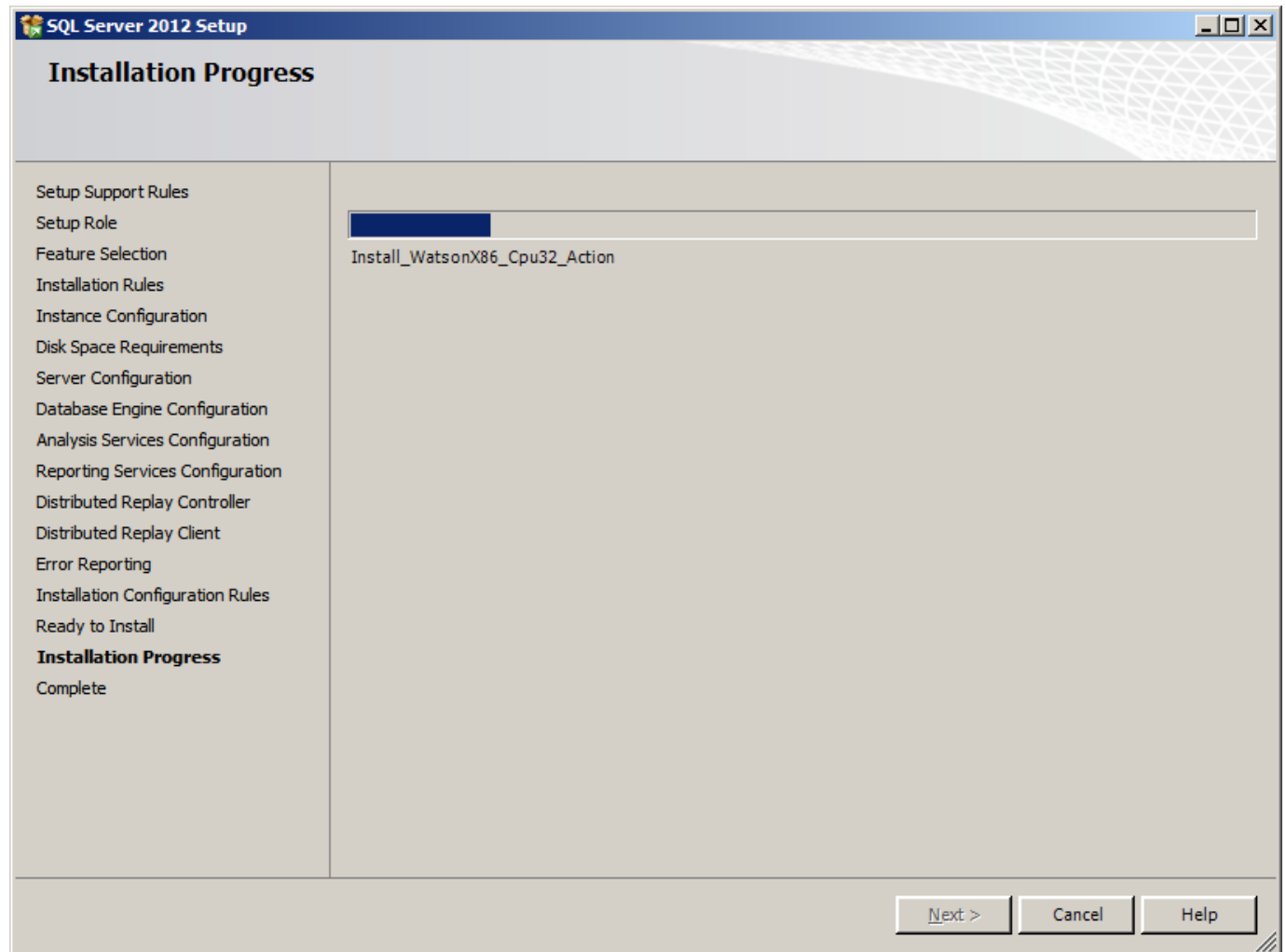
Ready to Install

We can check the summary and then pick the Install button.



Installation Progress

It will take about an hour to install the software.



Installation Completed

We succeeded
in the
installation.

